



## 268 MAIN STREET

Historic Main Street in Park City | Executive Office Space For Lease

**OLD TOWN** 268 MAIN STREET | PARK CITY, UTAH 84060

### LEASE RATE

**\$1,500/month per office**

Historic Park City Main Street executive office space available for lease. The available suites offer a fabulous private office, with high ceilings and beautiful finishes on Park City's most coveted street. Great opportunity for tenants seeking individual office space in Old Town. Conveniently located near China Bridge Garage and Brewpub parking lot. Contact Listing agents for more information or to schedule a tour.

- 10 EXECUTIVE SUITES AVAILABLE
- SECOND FLOOR OFFICE SPACE
- CONVENIENT PARKING ACCESS
- WELL-MAINTAINED

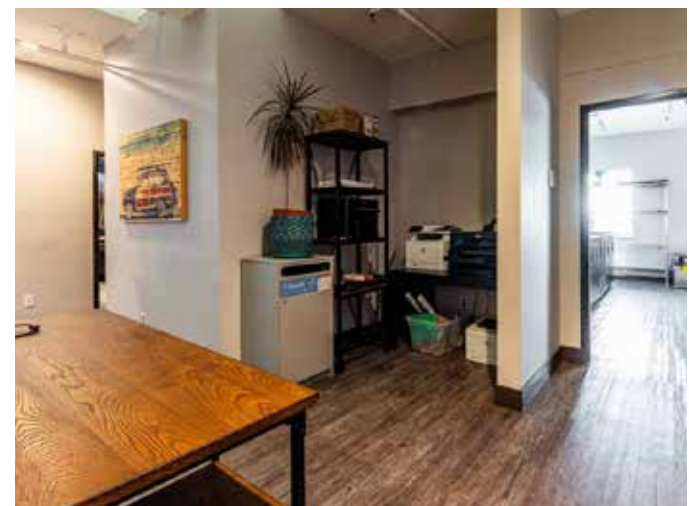
# PROPERTY PHOTOS

268 MAIN STREET | PARK CITY, UTAH 84060



# PROPERTY PHOTOS

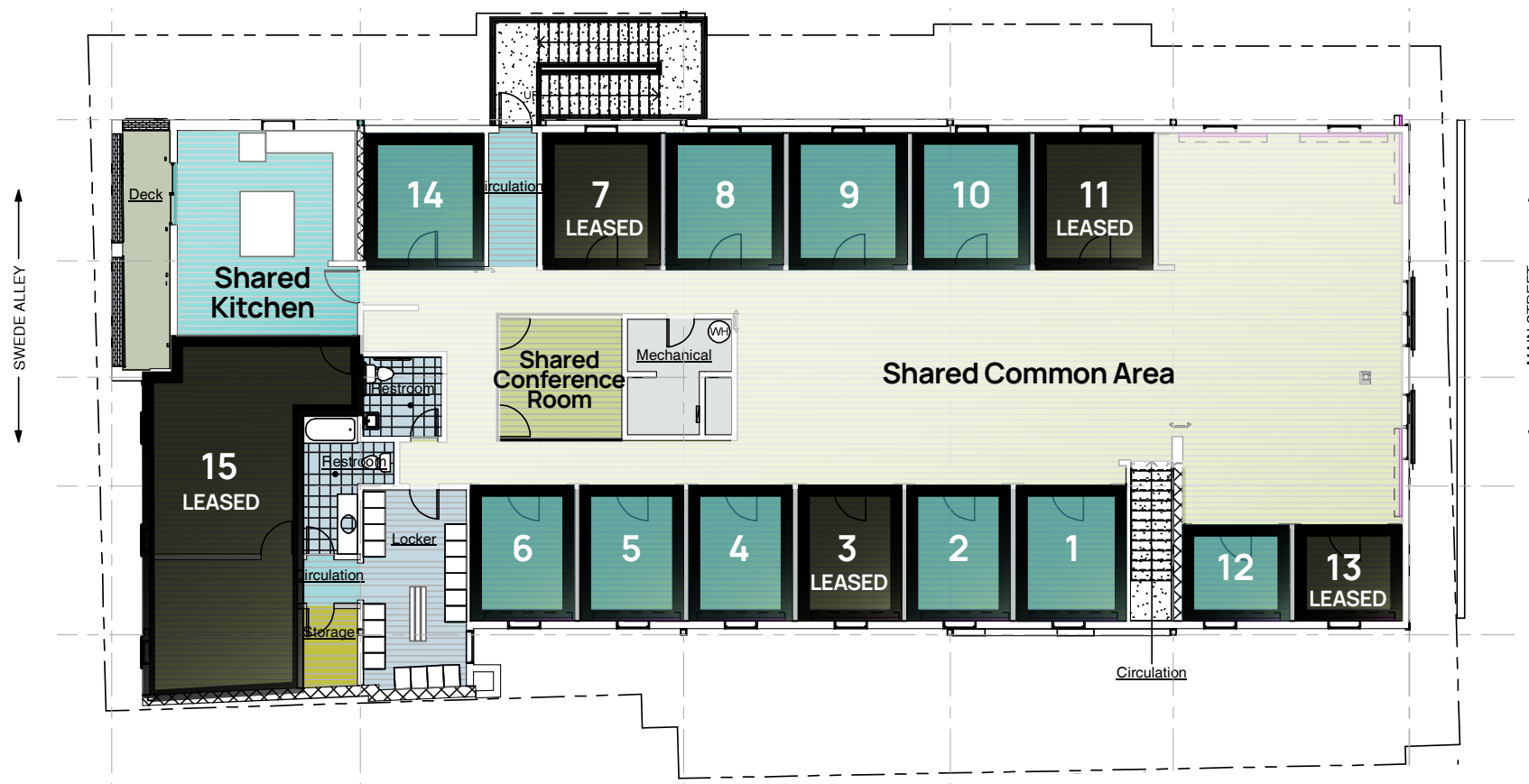
268 MAIN STREET | PARK CITY, UTAH 84060



# UPPER LEVEL FLOORPLANS

268 MAIN STREET | PARK CITY, UTAH 84060

AVAILABLE



# LOCATION

268 MAIN STREET | PARK CITY, UTAH 84060





**OP ROCKWELL BUILDING**  
268 MAIN STREET  
PARK CITY, UTAH 84060

- Prime Office Space on Park City's Historic Main Street
- Recently remodeled, with high end finishes including glass walled offices
- Open common areas
- Kitchen, lockers, showers, bring your skis!
- Adjacent to China Bridge Parking Garage
- Walk to world class shops, restaurants, and amenities



**CALL FOR MORE  
INFORMATION**

i

**BHHSUTAH.COM**

**JILL SNYDER**  
(435) 671-0793  
jill@wswcommercial.com

**TODD McLACHLAN**  
(801) 520-9005  
toddm@bhhsutah.com

**CHELSEA WALL**  
(435) 671-3541  
chelsea@wswcommercial.com

**BERKSHIRE  
HATHAWAY** | UTAH  
HOMESERVICES PROPERTIES

**COMMERCIAL DIVISION**