



## PARK CITY MIXED USE PROPERTY COMING SOON!

Industrial/Office

**QUINN'S JCT** 4350 FORESTDALE DRIVE | PARK CITY, UTAH 84098

**\$32 PSF NNN**

**JILL SNYDER**

435 671-0793

jill@wswcommercial.com

**TODD MCLACHLAN**

801 520-9005

todd@utahcre.com

**CHELSEA WALL**

435 671-3541

chelsea@wswcommercial.com

- Brand New Construction
- Build to Suit
- Efficient Building Standards
- Forestdale Drive location
- Building total 26,141 square feet
- Easy access to Park City, SLC, and Heber
- Ski Resort Views

# RENDERINGS

4350 FORESTDALE DRIVE | PARK CITY, UTAH 84098



3D View 1



3D View 2



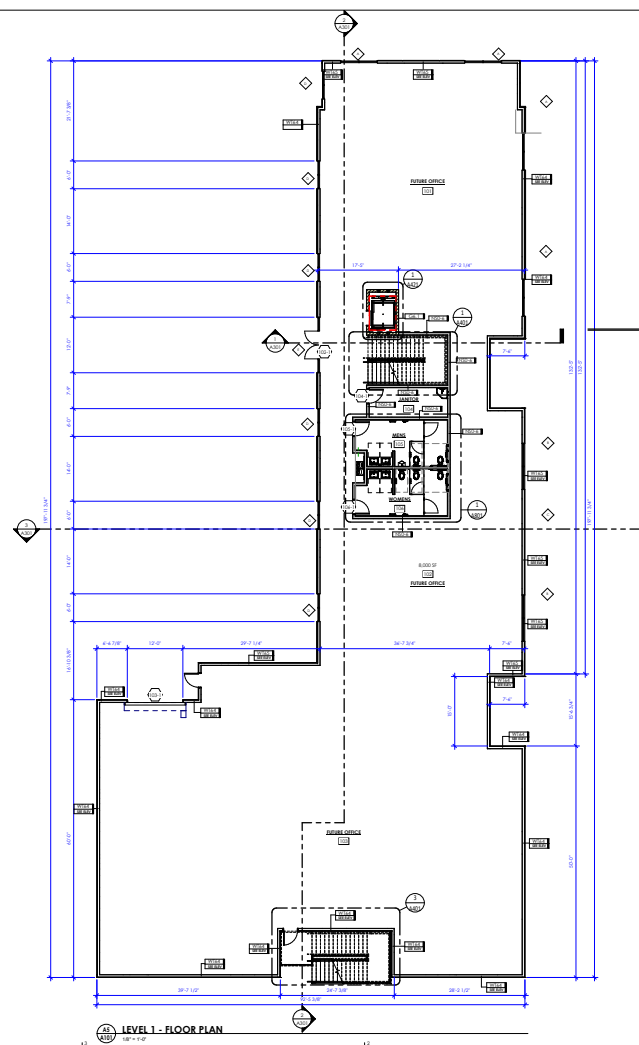
3D View 3



3D View 4

# PLANS

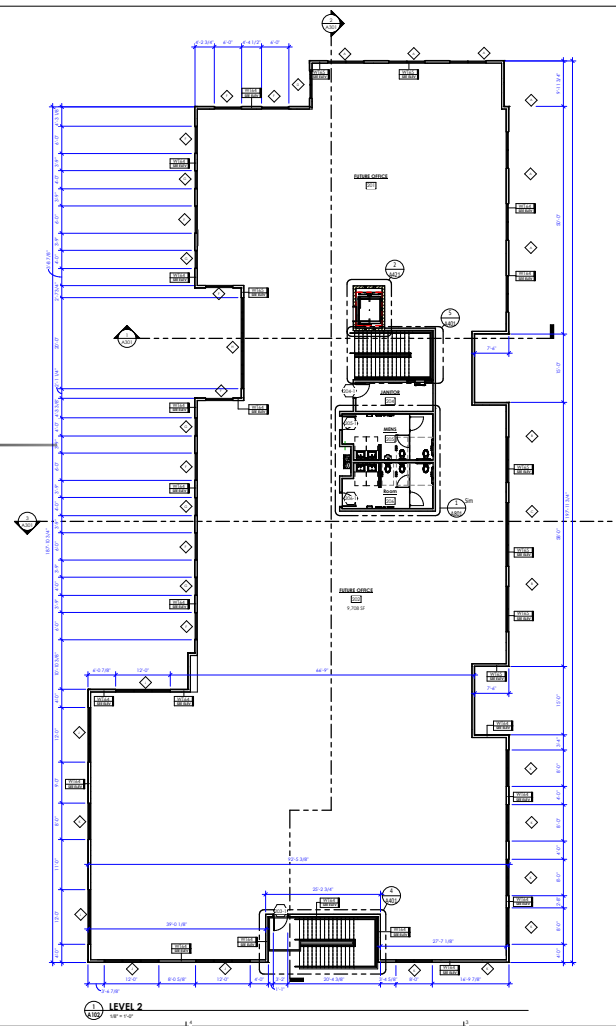
4350 FORESTDALE DRIVE | PARK CITY, UTAH 84098



**LEVEL 1 TOTAL SF: 11,662 sf**  
RENTABLE SF: 10,152 sf  
COMMON AREA SF: 1,510 sf

**LEVEL 2 TOTAL SF: 14,749 sf**  
RENTABLE SF: 13,278 sf  
COMMON AREA SF: 1,201 sf

**BUILDING TOTAL SF: 26,411 sf**  
RENTABLE SF: 23,430 sf  
COMMON AREA SF: 2,711 sf



GRAPHIC SCALE







**JILL SNYDER**  
435 671-0793  
jill@wswcommercial.com

**TODD MCLACHLAN**  
801 520-9005  
todd@utahcre.com

**CHELSEA WALL**  
435 671-3541  
chelsea@wswcommercial.com

**BERKSHIRE HATHAWAY** | UTAH PROPERTIES  
HOMESERVICES

COMMERCIAL DIVISION