

**BERKSHIRE  
HATHAWAY**  
HOMESERVICES

UTAH  
PROPERTIES

COMMERCIAL DIVISION

## OFFICE/RETAIL SPACE AVAILABLE IN KIMBALL JUNCTION!

Suite E

THE KILBY CENTER 6546 N LANDMARK DRIVE, SUITE-E PARK CITY, UT 84098

**\$28 PSF NNN | CAM \$7.34**

**JILL SNYDER**  
435-671-0793  
jill@utahcre.com

**TODD MCLACHLAN**  
801-520-9005  
todd@utahcre.com

**CHELSEA WALL**  
435-671-3541  
chelsea@utahcre.com

- Suite E: 2,261 SF
- Easy access off I-80
- Abundant parking

© 2026 BHH Affiliates, LLC. An independently owned and operated franchisee of BHH Affiliates, LLC. Berkshire Hathaway HomeServices and the Berkshire Hathaway HomeServices symbol are registered service marks of Columbia Insurance Company, a Berkshire Hathaway affiliate. Equal Housing Opportunity. Information not verified or guaranteed. Berkshire Hathaway HomeServices and/or its representatives do not warrant or guarantee this information. Information herein was provided by Owner/Seller. Lessee/Purchaser is responsible to confirm any information considered a factor in a decision to lease or purchase.

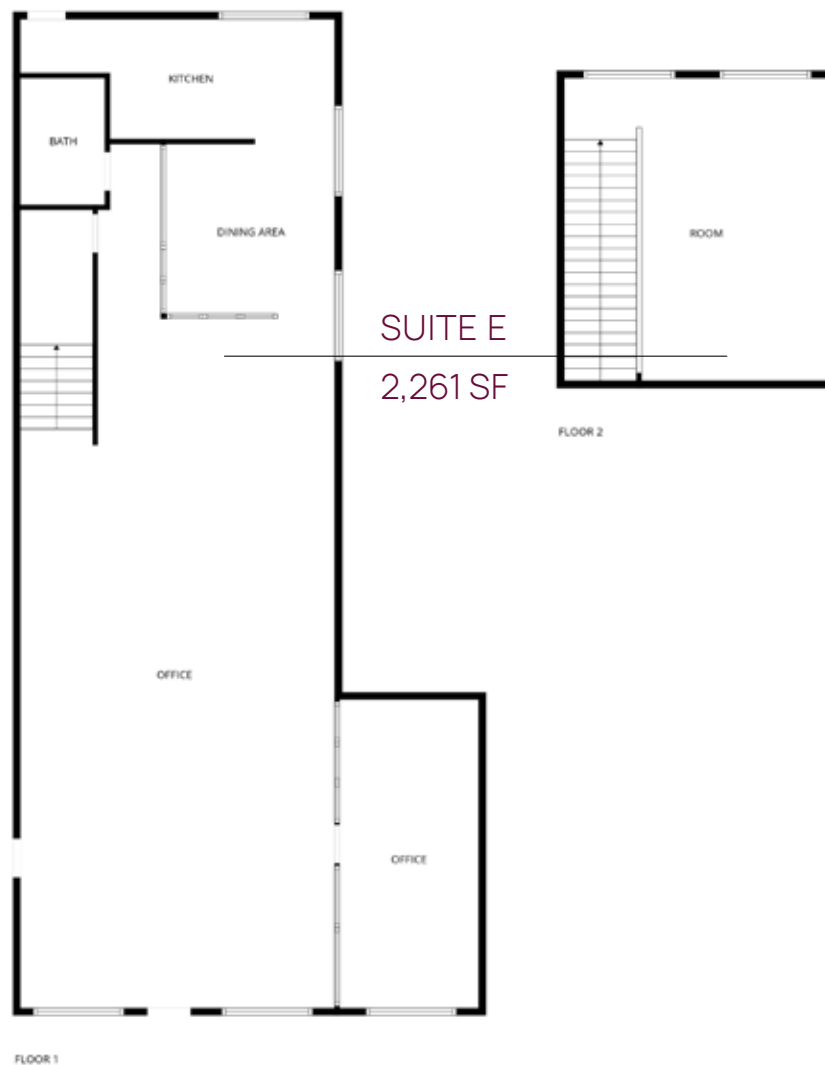
# PROPERTY PHOTOS

THE KILBY CENTER 6546 N LANDMARK DRIVE, SUITE-E, PARK CITY, UT 84098



# FLOORPLANS

THE KILBY CENTER 6546 N LANDMARK DRIVE, SUITE-E, PARK CITY, UT 84098



# LOCATION

THE KILBY CENTER 6546 N LANDMARK DRIVE, SUITE-E, PARK CITY, UT 84098





**THE KILBY CENTER**  
6546 N LANDMARK DRIVE  
SUITE-E  
PARK CITY, UT 84098

- Suite E: 2,261 SF
- Easy access off I-80
- Abundant parking
- Adjacent to Walmart anchored shopping center and Whole Foods anchored shopping center
- Strong tenant mix
- Great visibility
- 15 minutes to old town Park City
- 25 minutes to SLC

**\$28 PSF/NNN | CAM \$7.34**  
**CALL FOR INFORMATION**

i

**BHHSUTAH.COM**

**JILL SNYDER**  
435-671-0793  
jill@utahcre.com

**TODD MCLACHLAN**  
801-520-9005  
todd@utahcre.com

**CHELSEA WALL**  
435-671-3541  
chelsea@utahcre.com

**BERKSHIRE HATHAWAY** | UTAH  
HOMESERVICES | PROPERTIES

COMMERCIAL DIVISION