



**PRIME MAIN LEVEL RETAIL SPACE AVAILABLE**  
Suite C - Approximately 1,800 SF

875 IRON HORSE DRIVE, SUITE C | PARK CITY, UTAH 84060

FOR LEASE **\$38.00 PSF NNN**

**JILL SNYDER**  
(435) 671-0793  
jill@utahcre.com

**TODD McLACHLAN**  
(801) 520-9005  
todd@utahcre.com

**CHELSEA WALL**  
(435) 671-3541  
chelsea@utahcre.com

**BERKSHIRE  
HATHAWAY** | UTAH  
HOMESERVICES PROPERTIES

COMMERCIAL DIVISION

© 2025 BHH Affiliates, LLC. An independently owned and operated franchisee of BHH Affiliates, LLC. Berkshire Hathaway HomeServices and the Berkshire Hathaway HomeServices symbol are registered service marks of Columbia Insurance Company, a Berkshire Hathaway affiliate. Information not verified or guaranteed. Berkshire Hathaway HomeServices and/or its representatives do not warrant or guarantee this information. Information herein was provided by Owner/Seller. Lessee/Purchaser is responsible to confirm any information considered a factor in a decision to lease or purchase.

# PROPERTY DETAILS

**FOR LEASE** 875 IRON HORSE DRIVE, SUITE C | PARK CITY, UTAH 84060

An excellent opportunity to lease flexible retail or office space in the heart of Park City. Located within a well-known center alongside strong national co-tenants, this space offers outstanding visibility, convenience, and brand synergy.

## CO-TENANTS INCLUDE:

- Sherwin-Williams Paints
- UPS Store

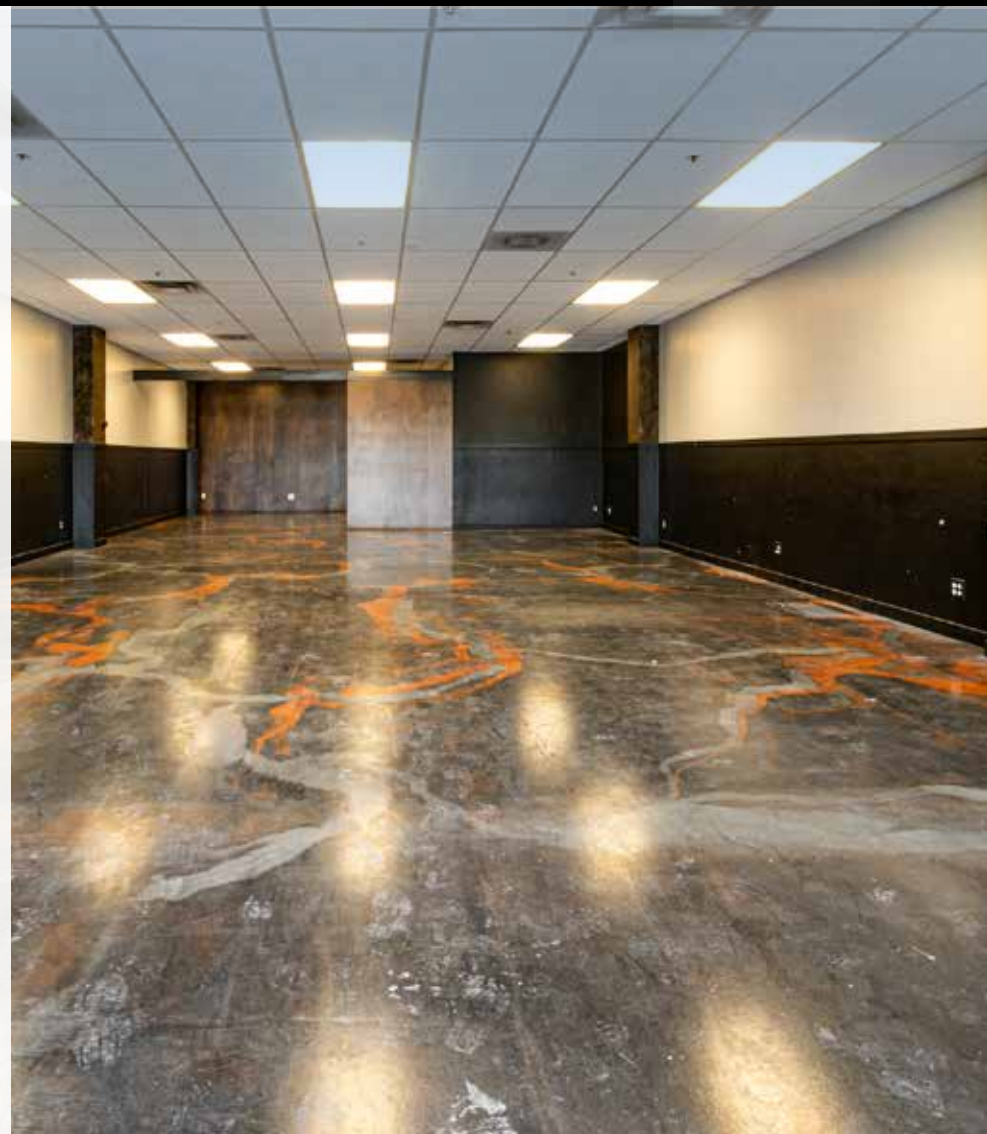
## PROPERTY HIGHLIGHTS

- Approx. 1,800 SF of versatile office/retail space
- Located in a highly trafficked area near downtown Park City
- Excellent signage opportunities and exposure along Iron Horse Drive
- Strong synergy with trusted national brands
- Ideal for professional services, creative offices, specialty retail, and more
- Ample parking available for customers and employees
- Easy access to major roads, residential neighborhoods, and resorts

## IDEAL USES

- Professional services
- Health & wellness studios
- Specialty retail
- Design or creative office space
- Showroom use

Rare availability in a proven, high-traffic Park City location — move quickly to secure your space! Contact us today for a private tour and leasing details!





# PROPERTY PHOTOS

FOR LEASE 875 IRON HORSE DRIVE, SUITE C | PARK CITY, UTAH 84060

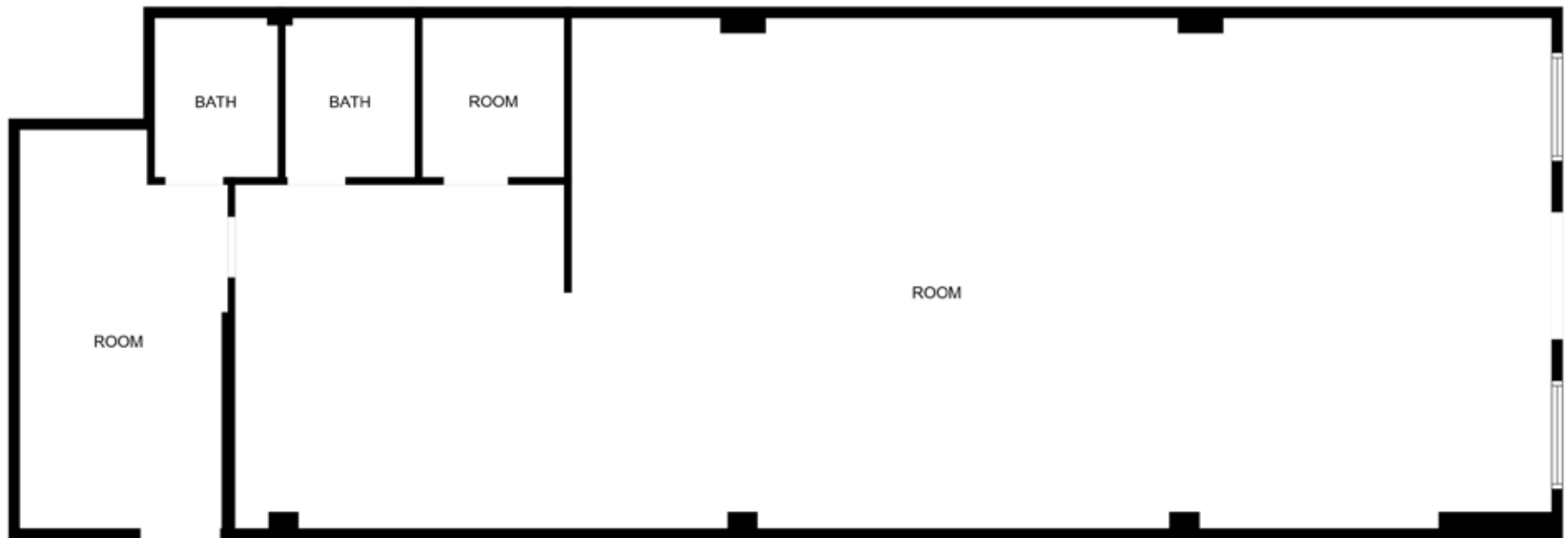


# FLOOR PLAN

FOR LEASE 875 IRON HORSE DRIVE, SUITE C | PARK CITY, UTAH 84060

SUITE C: APPROXIMATELY 1,800 SF

\$38 PSF NNN







875 Iron Horse Drive, Suite C

Contact us today to schedule a tour or request additional information!

**JILL SNYDER**  
(435) 671-0793  
jill@utahcre.com

**TODD McLACHLAN**  
(801) 520-9005  
todd@utahcre.com

**CHELSEA WALL**  
(435) 671-3541  
chelsea@utahcre.com

**BERKSHIRE  
HATHAWAY** | UTAH  
HOMESERVICES PROPERTIES

COMMERCIAL DIVISION

© 2025 BHH Affiliates, LLC. An independently owned and operated franchisee of BHH Affiliates, LLC. Berkshire Hathaway HomeServices and the Berkshire Hathaway HomeServices symbol are registered service marks of Columbia Insurance Company, a Berkshire Hathaway affiliate. Equal Housing Opportunity. Information not verified or guaranteed. Berkshire Hathaway HomeServices and/or its representatives do not warrant or guarantee this information. Information herein was provided by Owner/Seller. Lessee/Purchaser is responsible to confirm any information considered a factor in a decision to lease or purchase.