



RARE RETAIL LEASING OPPORTUNITY AT PCMR BASE AREA RETAIL | PARK CITY

1385 LOWELL AVENUE | PARK CITY, UTAH 84060

204-1,087 SF | \$40 - \$55 PSF NNN

JILL SNYDER
435-671-0793
jill@utahcre.com

TODD MCLACHLAN
801-520-9005
todd@utahcre.com

CHELSEA WALL
435-671-3541
chelsea@utahcre.com

**BERKSHIRE
HATHAWAY** | UTAH
HOMESERVICES | PROPERTIES

COMMERCIAL DIVISION

© 2026 BHH Affiliates, LLC. An independently owned and operated franchisee of BHH Affiliates, LLC. Berkshire Hathaway HomeServices and the Berkshire Hathaway HomeServices symbol are registered service marks of Columbia Insurance Company, a Berkshire Hathaway affiliate. Equal Housing Opportunity. Information not verified or guaranteed. Berkshire Hathaway HomeServices and/or its representatives do not warrant or guarantee this information. Information herein was provided by Owner/Seller. Lessee/Purchaser is responsible to confirm any information considered a factor in a decision to lease or purchase.

PROPERTY PHOTOS

FOR LEASE 1385 LOWELL AVENUE | PARK CITY, UTAH 84060



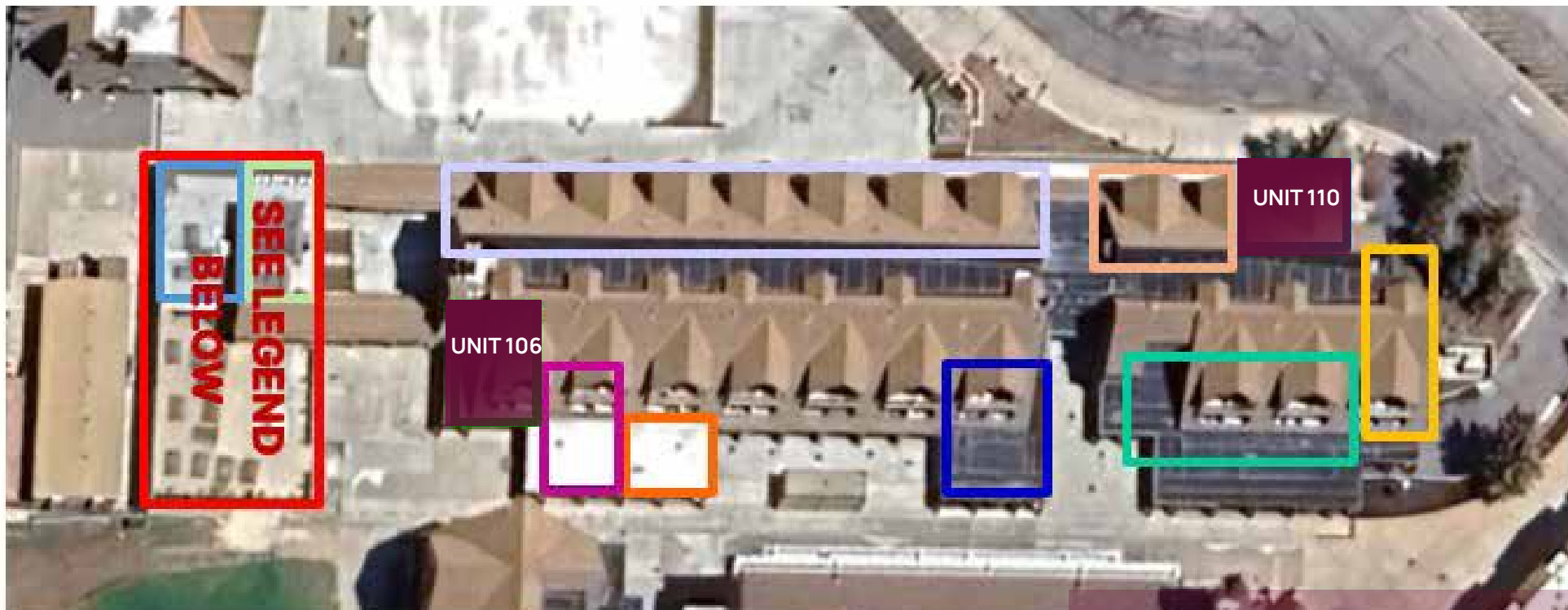
PROPERTY PHOTOS

FOR LEASE 1385 LOWELL AVENUE | PARK CITY, UTAH 84060



SITE PLAN

FOR LEASE 1385 LOWELL AVENUE | PARK CITY, UTAH 84060



- | | |
|---|---|
| ■ BLUE BIRD CAFÉ (Second level, includes deck area) | ■ ROCKY MOUNTAIN CHOCOLATE FACTORY (Second level entrance facing Lowell Ave) |
| ■ THE LOCKERS AT THE LODGE (Located on 1 st level, ice rink level) | ■ R & R SPORTS ("Aloha - <u>Fire lane</u> " located on Second level entrance towards fire lane) |
| ■ COLE SPORT TUNING (Located on 1 st level, ice rink level) | ■ COMPAS MANAGEMENT (Second level entrance towards fire lane) |
| ■ COLE SPORTS | ■ SKI VAULT (Second level entrance towards fire lane) |
| ■ MARRIOTT (Located on 1 st level, ice rink level) | ■ BERKSHIRE HATHAWAY HOME SERVICES (Second level entrance towards fire lane) |

AVAILABILITY:

- UNIT AC-106: 887 SF | \$55 PSF NNN
- UNIT 110: 950 SF | \$55 PSF NNN

SITE PLAN

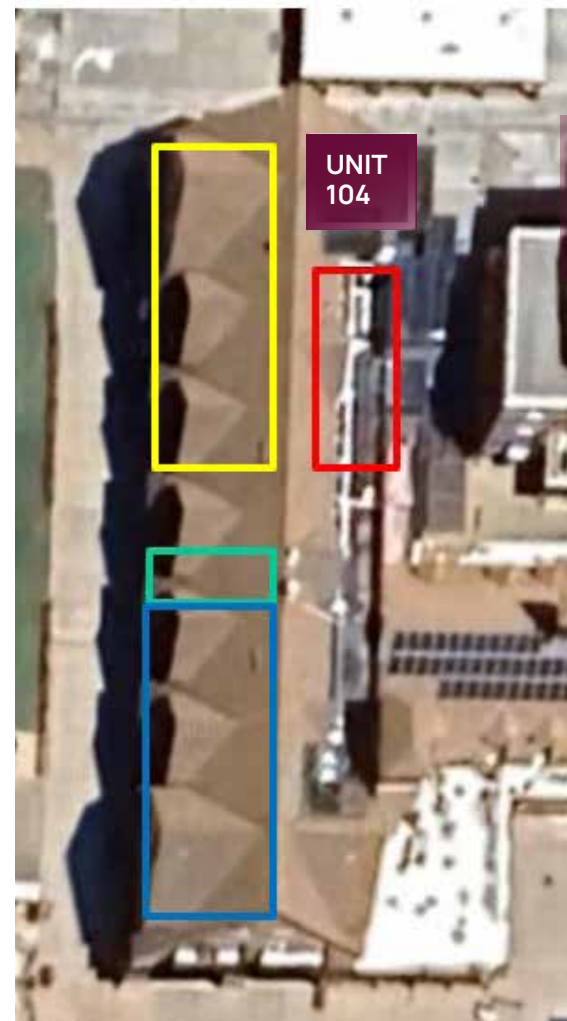
FOR LEASE 1385 LOWELL AVENUE | PARK CITY, UTAH 84060



AVAILABILITY:

- UNIT C5-5: 1,087 SF
\$40 PSF NNN

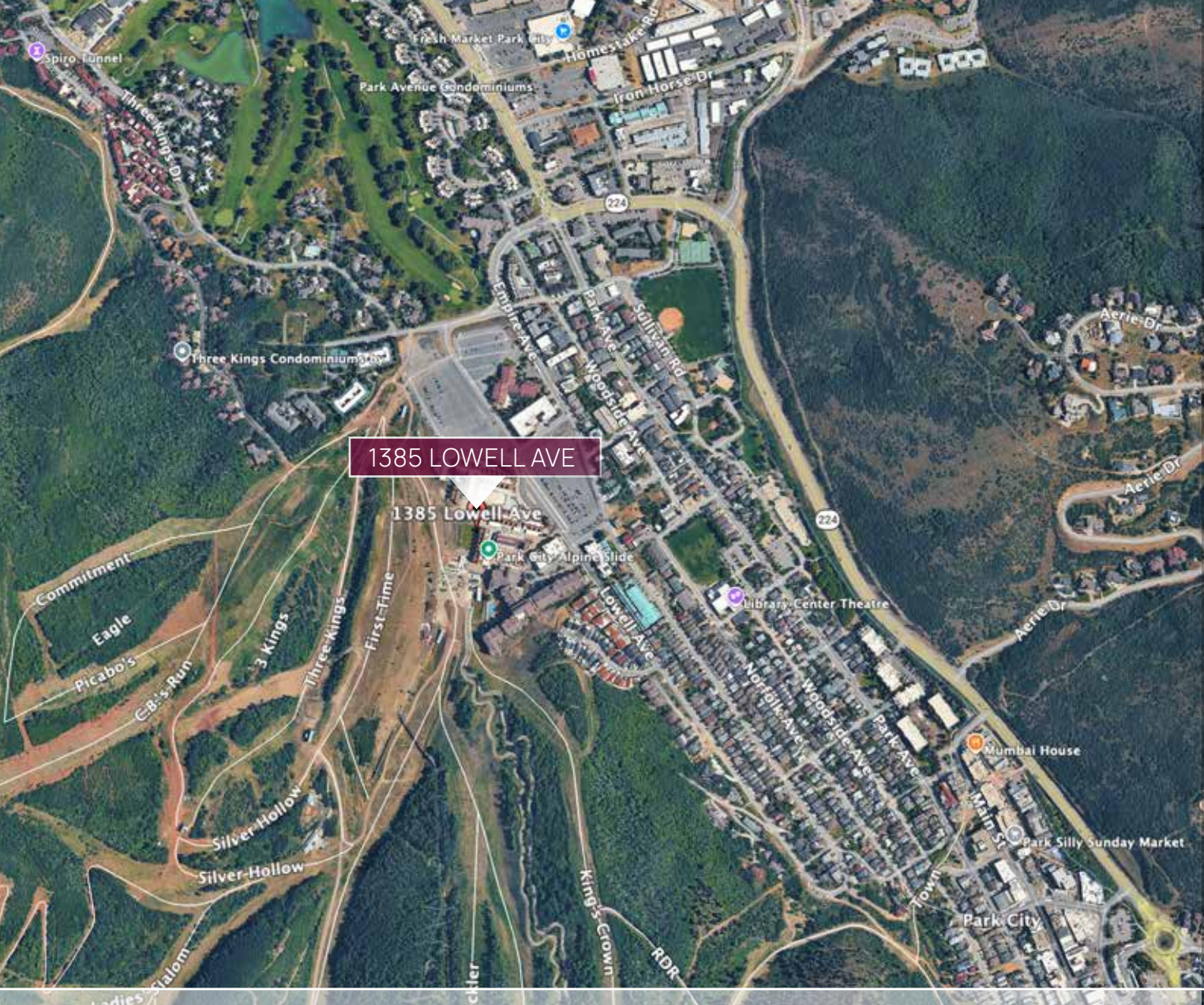
- FOOD FOR THOUGHT (Located on 1st level, ice rink level)
- SSI VENTURE DBA BREEZE/MAX (Located on 1st level, ice rink level)
- EPIC WORLD (JACKSON LOCKERS)
- JACKSON'S BASE CAMP (Located on 1st level, ice rink level)
- EPIC MTN DBA JACKSON HIDEAWAY (Located on 1st level, ice rink level)
- MACKABEN, INC "WILDINGS" (Located on 1st level, ice rink level)
- PIG PEN SALOON (Located on 1st level, ice rink level)



AVAILABILITY:

- UNIT 104: 204 SF
\$55 PSF NNN

- BAHNHOF SPORTS
- R&R SPORTS – LOFT (ALOHA)
- BOOTWORKS
- ALPINE SKI SERVICES



FOR LEASE
1385 LOWELL AVENUE
PARK CITY, UTAH 84060

- Located at the base of Park City Mountain Resort with direct access to year-round foot traffic
- Premier destination setting with strong tourism and affluent local customer base
- Ideal for retail, boutique, or experiential concepts
- Surrounded by established resort amenities, lodging, and dining
- Excellent visibility and walkability within the base village area
- Immediate proximity to ski lifts, ticketing, and skier services
- Year-round traffic driven by skiing, mountain biking, hiking, and events
- Rare small-format retail availability in a supply-constrained market

Contact us today to schedule a tour or request additional information!

JILL SNYDER
(435) 671-0793
jill@utahcre.com

TODD McLACHLAN
(801) 520-9005
todd@utahcre.com

CHELSEA WALL
(435) 671-3541
chelsea@utahcre.com

**BERKSHIRE
HATHAWAY** | UTAH
HOMESERVICES | PROPERTIES

COMMERCIAL DIVISION