



NOW LEASING OFFICE & RETAIL SPACE AT HOLIDAY VILLAGE
Main Level Retail/Office Vacancy + Second Floor Office Vacancy

1776 PARK AVENUE | PARK CITY, UTAH 84060

\$25 - \$35 PSF NNN | CAM \$11.76

JILL SNYDER
(435) 671-0793
jill@utahcre.com

TODD MCLACHLAN
(801) 520-9005
todd@utahcre.com

CHELSEA WALL
(435) 671-3541
chelsea@utahcre.com

**BERKSHIRE
HATHAWAY** | UTAH
HOMESERVICES | PROPERTIES

COMMERCIAL DIVISION

© 2026 BHH Affiliates, LLC. An independently owned and operated franchisee of BHH Affiliates, LLC. Berkshire Hathaway HomeServices and the Berkshire Hathaway HomeServices symbol are registered service marks of Columbia Insurance Company, a Berkshire Hathaway affiliate. Equal Housing Opportunity. Information not verified or guaranteed. Berkshire Hathaway HomeServices and/or its representatives do not warrant or guarantee this information. Information herein was provided by Owner/Seller. Lessee/Purchaser is responsible to confirm any information considered a factor in a decision to lease or purchase.

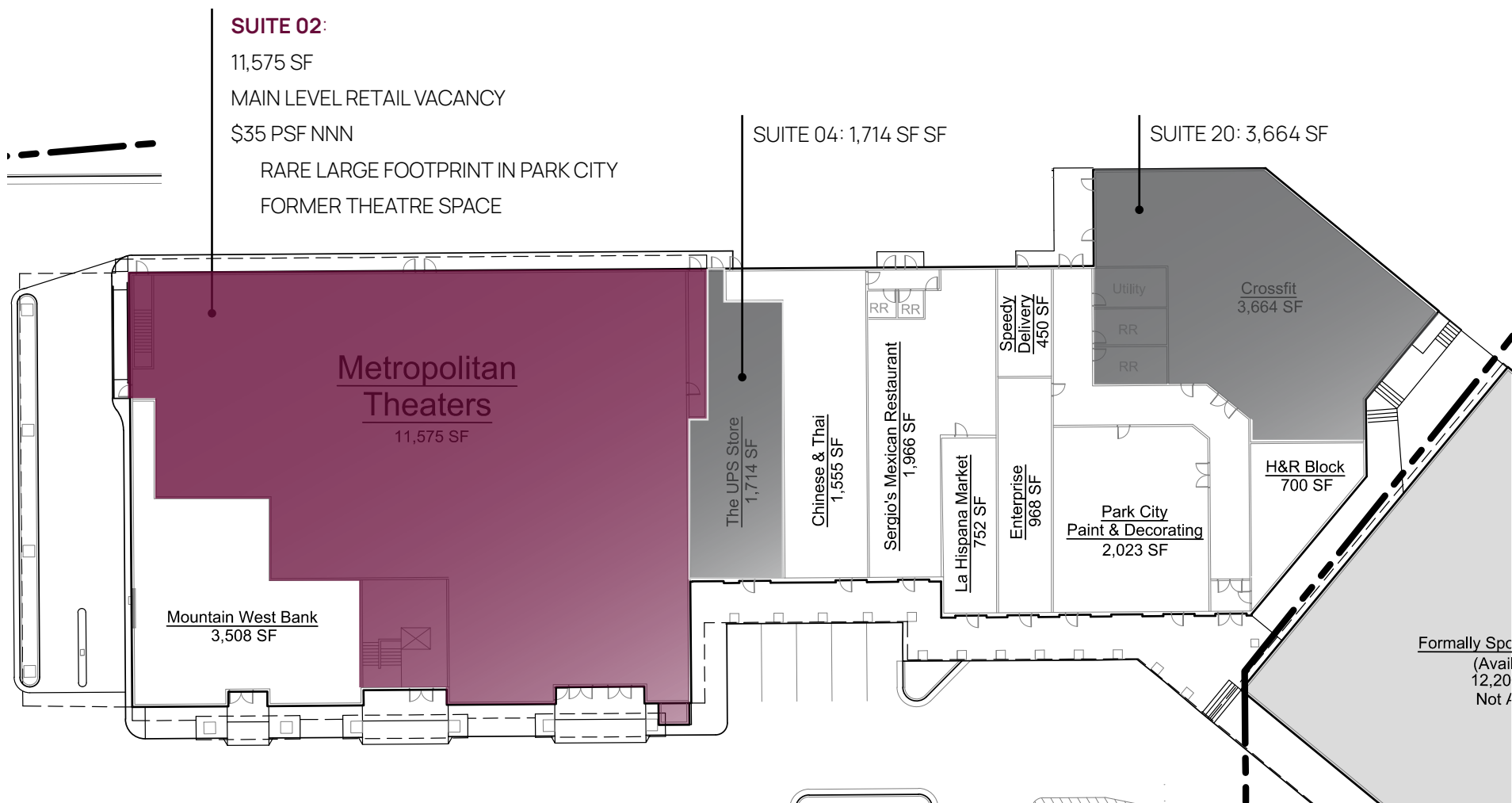
MAIN LEVEL PHOTOS

FOR LEASE 1776 PARK AVENUE | PARK CITY, UTAH 84060



MAIN LEVEL FLOOR PLAN

FOR LEASE 1776 PARK AVENUE | PARK CITY, UTAH 84060



MAIN LEVEL FLOOR PLAN

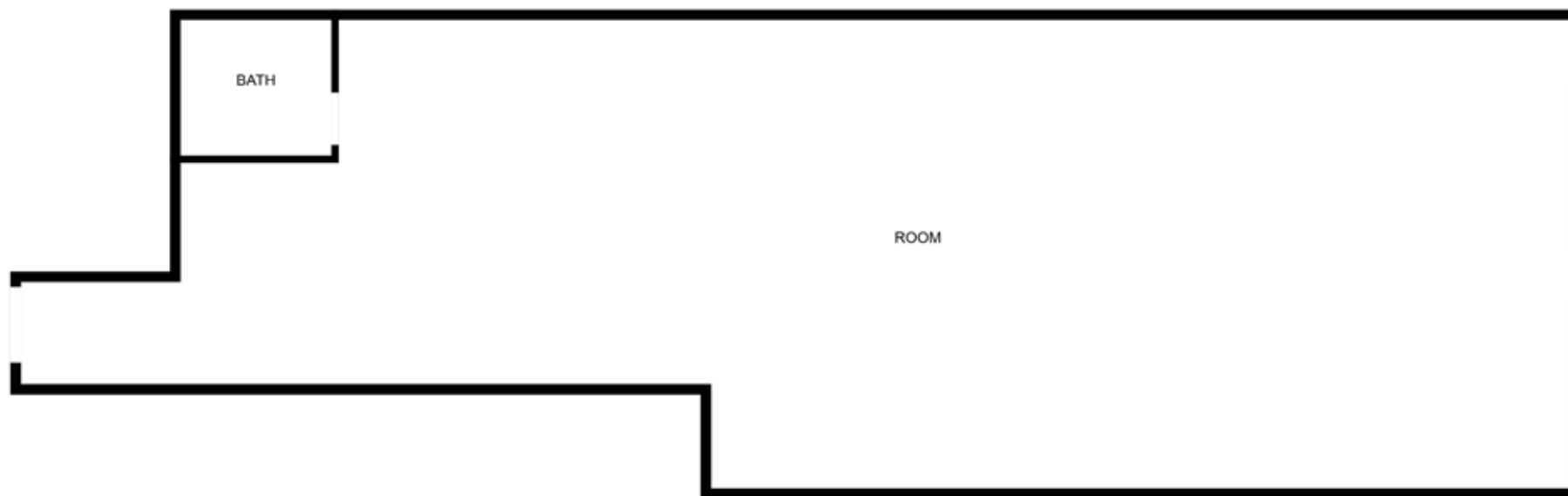
FOR LEASE 1776 PARK AVENUE | PARK CITY, UTAH 84060

SUITE 04:

1,714 SF

MAIN LEVEL RETAIL/OFFICE VACANCY

\$35 PSF NNN



MAIN LEVEL FLOOR PLAN

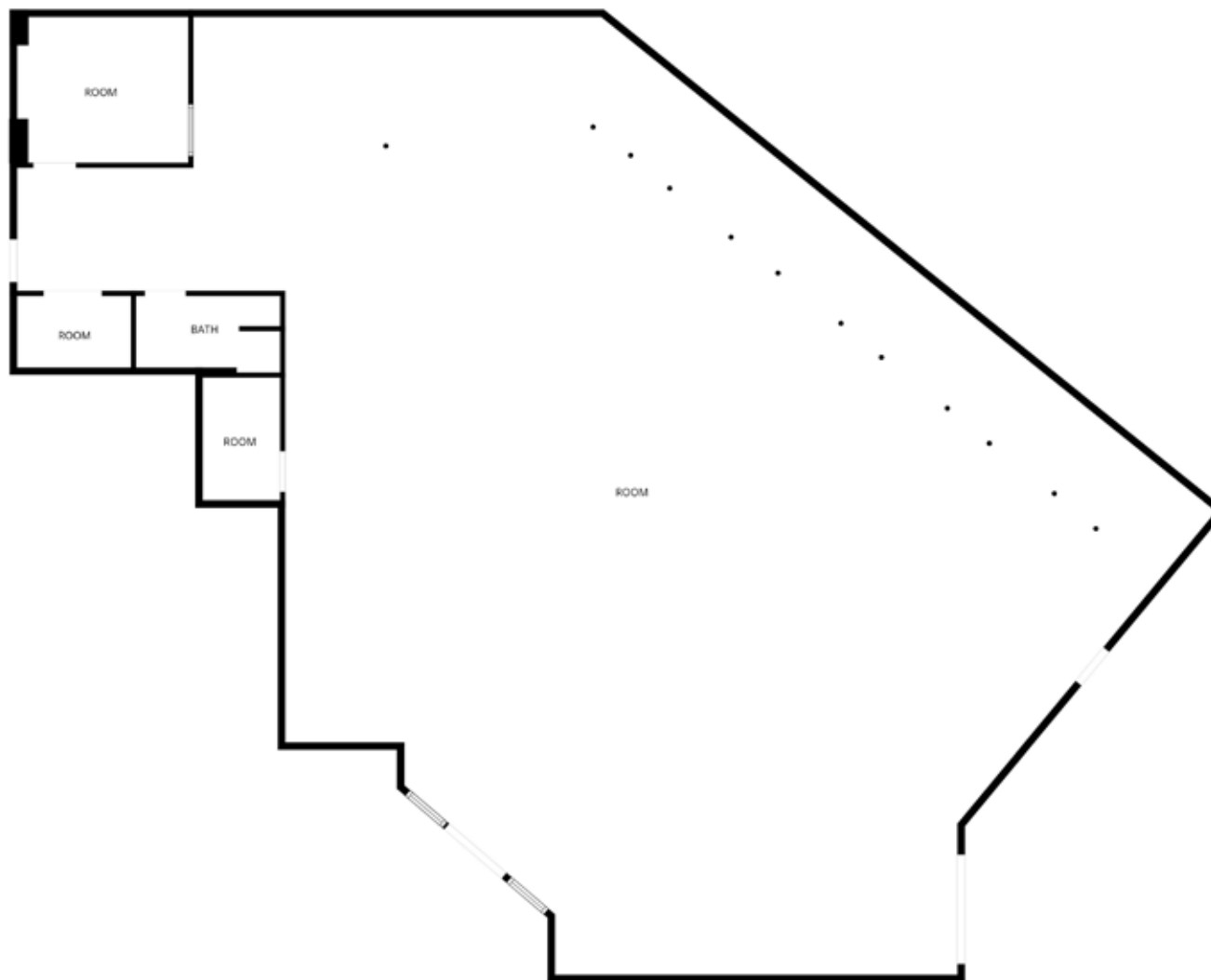
FOR LEASE 1776 PARK AVENUE | PARK CITY, UTAH 84060

SUITE 20:

3,664 SF

\$25 PSF NNN

AVAILABLE 5/1/2026



SECOND FLOOR PHOTOS

FOR LEASE 1776 PARK AVENUE | PARK CITY, UTAH 84060



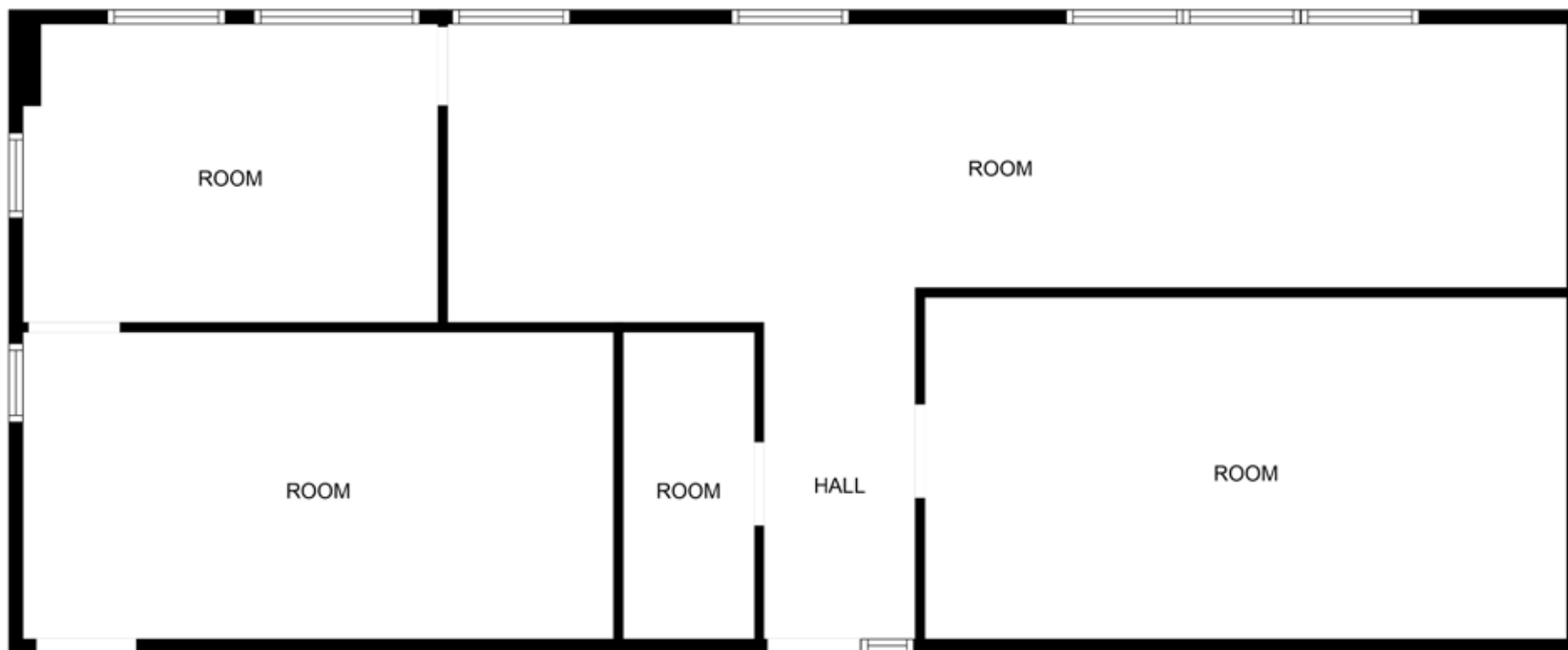
SECOND FLOOR-FLOOR PLAN

FOR LEASE 1776 PARK AVENUE | PARK CITY, UTAH 84060

SUITE 203/205:

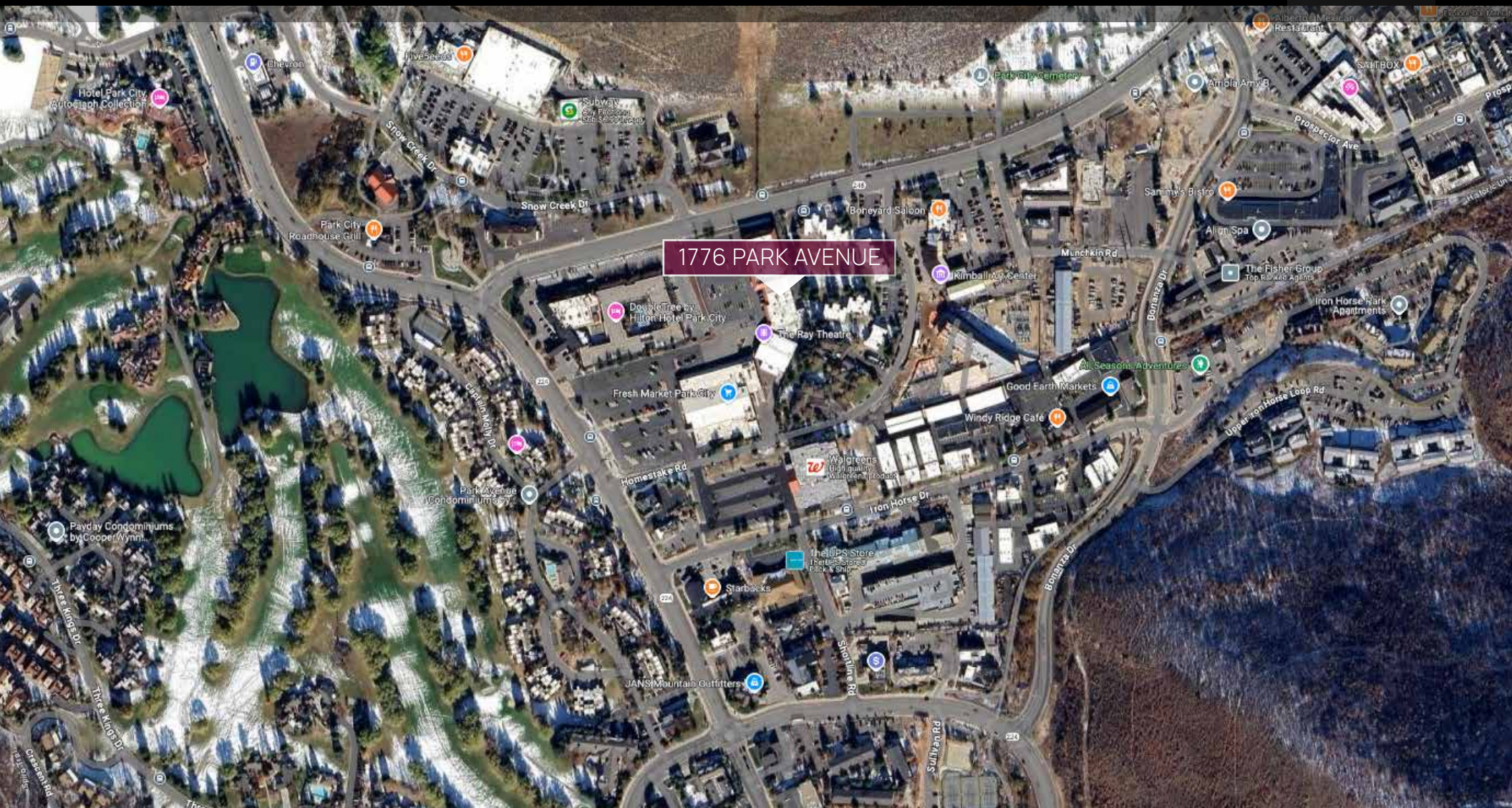
1,524 SF

\$25 PSF NNN



LOCATION

FOR LEASE 1776 PARK AVENUE | PARK CITY, UTAH 84060





FOR LEASE

1776 PARK AVENUE

PARK CITY, UTAH 84060

- Main Level Retail Vacancy -
\$35 PSF NNN, CAM \$11.76
Suite 02: 11,575 SF
Great Signage on Kearns Blvd
- Main Level Retail Vacancy - Available 5/1/26
\$25 PSF NNN, CAM \$11.76
Suite 20: 3,664 SF
- Main Level Retail/Office Vacancy -
\$30 PSF NNN, CAM \$11.76
Suite 04: 1,714 SF
- Second Floor Office Vacancy -
\$25 PSF NNN, CAM \$11.76
Suite 203/205: 1,524 SF
- Unbeatable Park City location –
minutes from Main Street & Resorts
- Retail + Office mix in one of Park City's
most established centers
- High foot traffic year-round from locals
& visitors
- Plenty of parking for customers and staff
- Flexible floorplans for boutiques, offices,
wellness studios & more
- Perfect for boutique retail, creative
offices, or service businesses
- Strong area demographics with high
disposable income

Contact us today to schedule a tour or request additional information!

JILL SNYDER
(435) 671-0793
jill@utahcre.com

TODD McLACHLAN
(801) 520-9005
todd@utahcre.com

CHELSEA WALL
(435) 671-3541
chelsea@utahcre.com

BERKSHIRE
HATHAWAY
HOMESERVICES | UTAH
PROPERTIES

COMMERCIAL DIVISION