

PRICE  
REDUCTION!



## WAREHOUSE/INDUSTRIAL SPACE AVAILABLE IN PARK CITY

4383 FORESTDALE DRIVE | PARK CITY, UTAH 84060

\$21 PSF NNN + \$5.75 CAM  
~~\$26 PSF NNN + \$5.75 CAM~~

JILL SNYDER  
(435) 671-0793  
jill@utahcre.com

TODD McLACHLAN  
(801) 520-9005  
todd@utahcre.com

CHELSEA WALL  
(435) 671-3541  
chelsea@utahcre.com

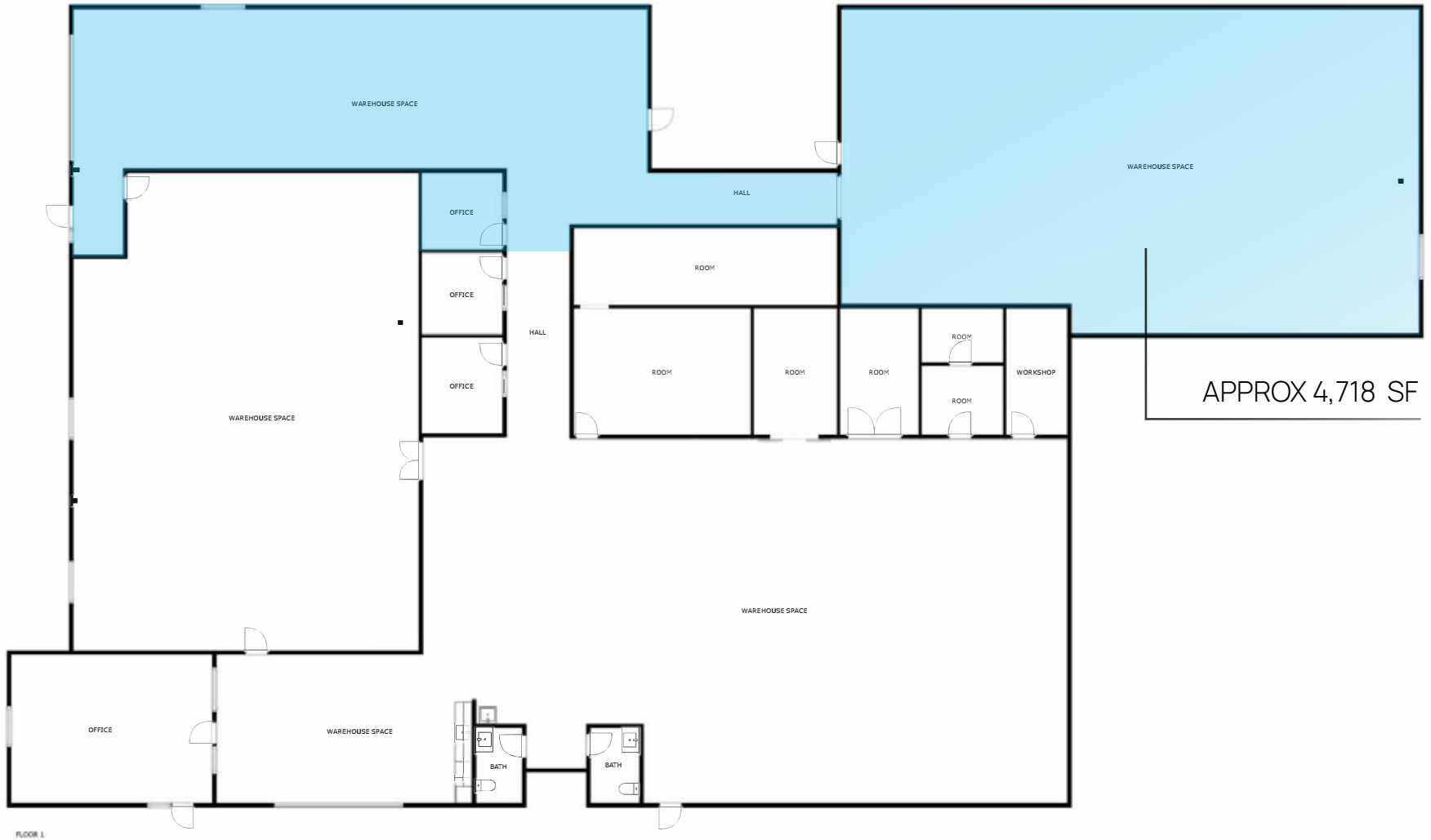
**BERKSHIRE  
HATHAWAY** | UTAH  
HOMESERVICES | PROPERTIES

COMMERCIAL DIVISION

© 2025 BHH Affiliates, LLC. An independently owned and operated franchisee of BHH Affiliates, LLC. Berkshire Hathaway HomeServices and the Berkshire Hathaway HomeServices symbol are registered service marks of Columbia Insurance Company, a Berkshire Hathaway affiliate. Equal Housing Opportunity. Information not verified or guaranteed. Berkshire Hathaway HomeServices and/or its representatives do not warrant or guarantee this information. Information herein was provided by Owner/Seller. Lessee/Purchaser is responsible to confirm any information considered a factor in a decision to lease or purchase.

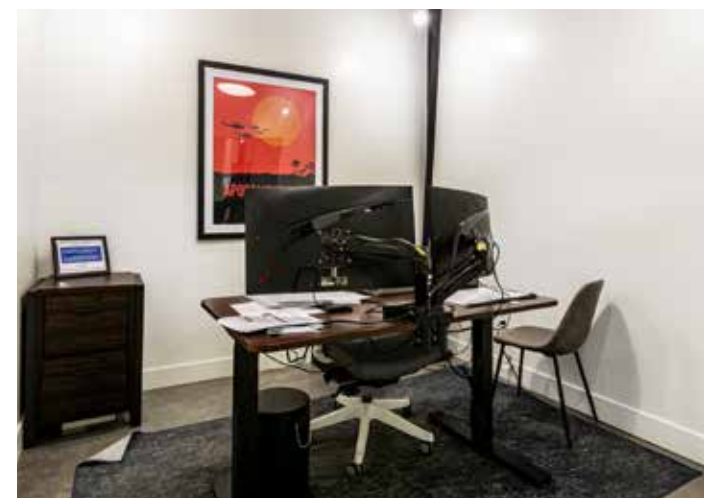
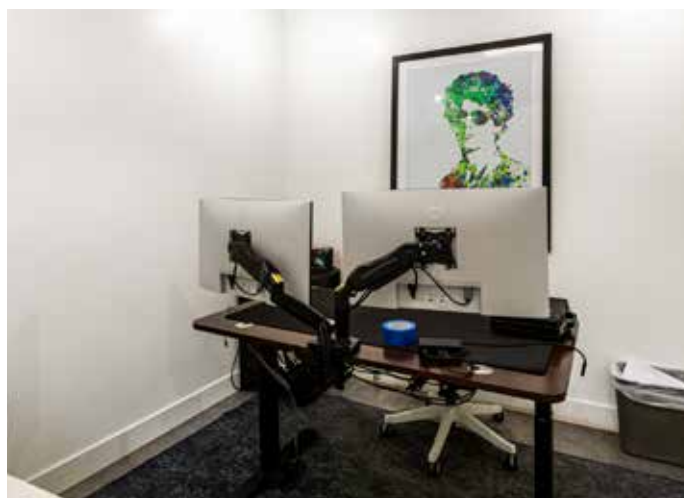
# FIRST LEVEL

4383 FORESTDALE DRIVE | PARK CITY, UTAH 84060



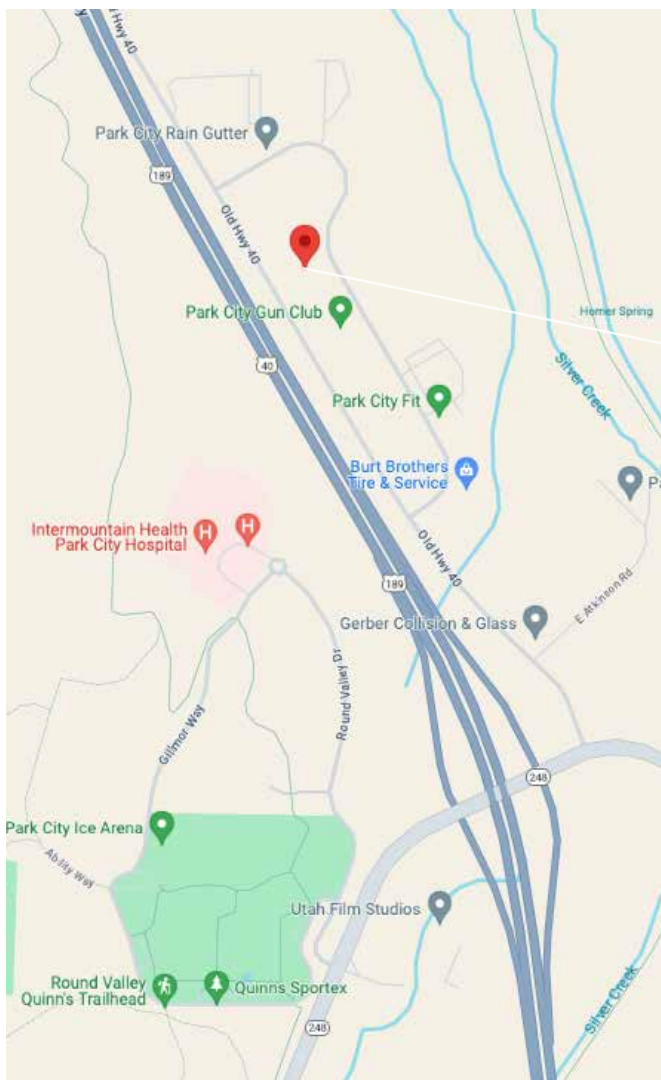
# FIRST LEVEL / PHOTOS

4383 FORESTDALE DRIVE | PARK CITY, UTAH 84060



# LOCATION

4383 FORESTDALE DRIVE | PARK CITY, UTAH 84060





**4383 FORESTDALE DRIVE**  
PARK CITY, UTAH

- Easy access to major highways
- Flexible floor plan- versatile space for industrial and office uses
- Recently updated with modern amenities and technology-ready infrastructure
- Abundant natural light throughout the building
- Ample dedicated parking for employees and visitors
- Scenic Views: Stunning mountain views from the premises
- Security Features: advanced security systems in place for peace of mind
- Local Amenities: Close proximity to dining, shopping, and recreational options
- Brand Visibility: High-visibility location
- Signage opportunities available
- Competitive Lease Terms

**\$21 PSF NNN + \$5.75 CAM**  
**CALL FOR MORE INFORMATION**

**JILL SNYDER**  
(435) 671-0793  
jill@utahcre.com

**TODD MCLACHLAN**  
(801) 520-9005  
todd@utahcre.com

**CHELSEA WALL**  
(435) 671-3541  
chelsea@utahcre.com

**BERKSHIRE HATHAWAY** | UTAH  
HOMESERVICES | PROPERTIES

COMMERCIAL DIVISION